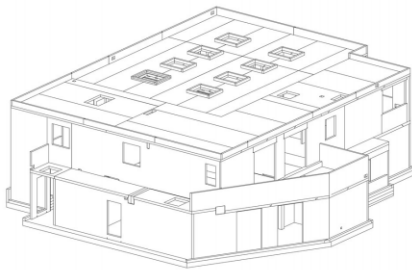


REGENTS PARK OPEN AIR THEATRE STUDIO



A new building housing rehearsal studios and a catering kitchen for Regents Park Open Air Theatre. The project brings together all the theatre's operations on the same site for the first time in the organisation's 86 year history.

Located in Regents Park, Westminster, London, the CLT superstructure was assembled amidst protected Royal Park trees in just 5 weeks. The light-weight structure required comparably small foundations thereby reducing impact on nearby tree roots.

Back in 2012 Eurban also delivered a new facility for Regents Park Open Air Theatre including a box office and back of house rehearsal spaces.

CLIENT

Regent's Park Open Air Theatre

ARCHITECT

Reed Watts

TIMBER ENGINEER

Eurban

MAIN CONTRACTOR

GPF Lewis

COMPLETION

2018

ASSEMBLY OF SUPERSTRUCTURE

5 weeks

SERVICES

Design, supply & assembly

MATERIALS

Cross-laminated timber, exposed timber finish



Photographs © Simon Kennedy