

# Downley House

1207

**Solid timber new build family house in an Area of Outstanding Natural Beauty in the Hampshire countryside.** The derelict facade of the original building remains on the site that was once part of the Ditcham Park Estate. The new family home has 5 bedrooms and a large central dining hall supported by exposed glulam foudre arches, the living quarters extend either side of this and include curved staircase towers and spiral stairs. The green roof and each facade are carefully integrated into the rural landscape.

## SERVICES

structural design of timber superstructure including foudre arch structure with steel connection details  
spiral stairs and curved panels  
supply and installation of timber superstructure

## MATERIALS

crosslam, glulam  
exposed steel connections

## INSTALLATION

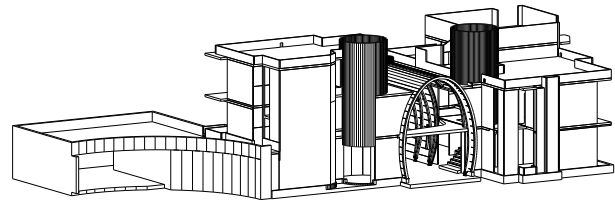
4 weeks

## GIFA

266m<sup>2</sup>

## STORED CARBON

165 tonnes CO<sub>2</sub>



## CLIENT

Private

## ARCHITECT

Birds Portchmouth Russum

## TIMBER ENGINEER

CarbonEng

## MAIN CONTRACTOR

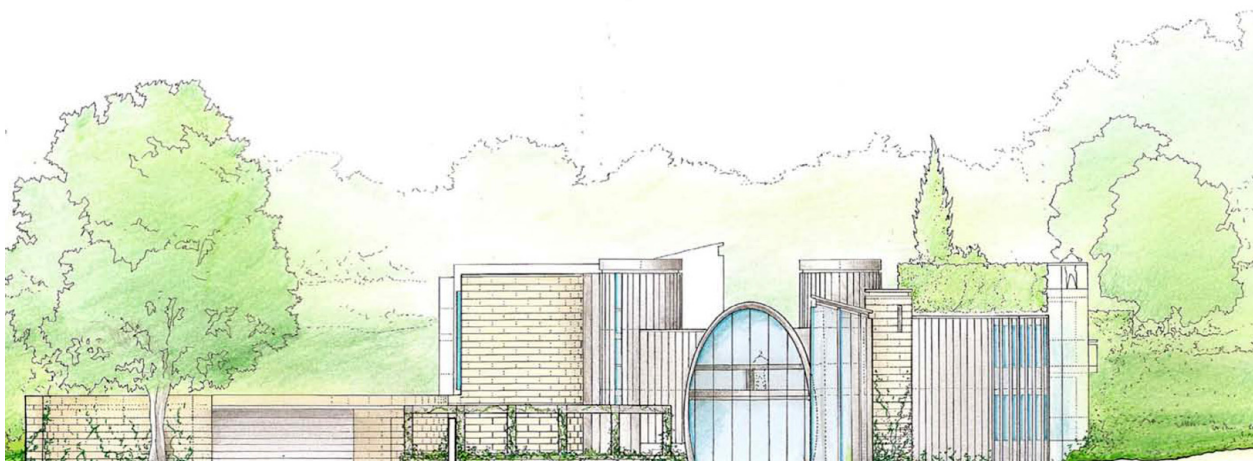
Projec-Technique

## PROJECT VALUE

£2.5 million

## COMPLETION

2011



© Birds Portchmouth Russum