

A private five-bedroom house built in rural Buckinghamshire. The ground floor is constructed of load-bearing brick walls on which sits the first floor solid timber structure. A central open-tread solid timber stair links the two-storeys and solid timber furniture sits within the ground floor kitchen and living areas. The timber structure is clad in vertical stained timber which acts as sun-shading on the external first floor terrace. The landscaping includes a green roof, a brick entrance courtyard and a pool.

SERVICES

supply and installation of timber superstructure

MATERIALS

crosslam. glulam
exposed timber finish throughout

INSTALLATION

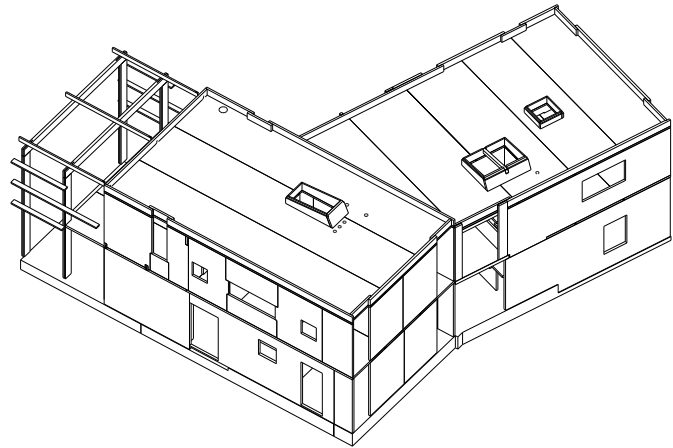
2 weeks

GIFA

338m²

STORED CARBON

50 tonnes CO₂



CLIENT

private

ARCHITECT

Emma & Spencer Guy

TIMBER ENGINEER

Tall Engineers

MAIN CONTRACTOR

none

PROJECT VALUE

not disclosed

COMPLETION

2011



© Guy