

**Construction of an eco-centre for Roe Green Junior School in Kingsbury, North London.** This single storey solid timber building demonstrates zero carbon thinking and, at the request of the school, makes visible sustainable construction. The use of solid timber, wood fibre insulation, maximum natural daylight and ventilation in conjunction with air source heat pumps, PVs, wind turbines and localised rainwater collection should allow the building to achieve a zero carbon footprint over its anticipated lifetime.

## SERVICES

structural design of timber superstructure  
supply and installation of timber superstructure

## MATERIALS

crosslam, glulam  
exposed timber finish throughout

## INSTALLATION

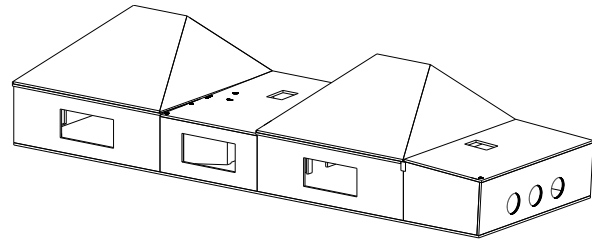
2 weeks

## GIFA

192m<sup>2</sup>

## STORED CARBON

54 tonnes CO<sub>2</sub>



## CLIENT

Brent Council

## ARCHITECT

dm3 Architecture

## TIMBER ENGINEER

CarbonEng

## MAIN CONTRACTOR

M P Building

## PROJECT VALUE

£360,000

## COMPLETION

2010

## ENVIRONMENTAL RATING

EPC A13 Carbon Rating



© dm3 Architecture