

La Portelet

0890

A two-storey private house overlooking Rocquaine Bay in Guernsey. This three-bedroom residence consists of a basement with media room and library and a large ground floor living area with wide views across the bay, sheltered by a curved roof. The structure of the roof comprised curved glulam beams and curved CLT panels.

SERVICES

structural design of timber superstructure
supply and installation of timber superstructure

MATERIALS

crosslam. glulam.
exposed timber finish throughout

INSTALLATION

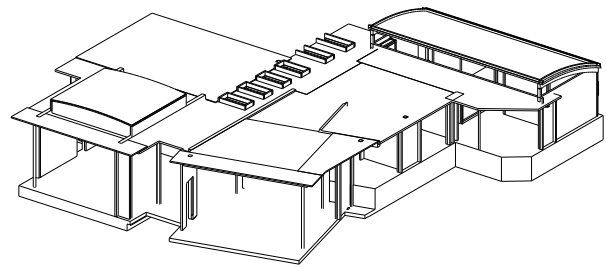
3 weeks

GIFA

353m²

STORED CARBON

65 tonnes CO₂



CLIENT

Moohus

ARCHITECT

BasMooArc

TIMBER ENGINEER

CarbonEng

MAIN CONTRACTOR

Driftwood Developments Limited

PROJECT VALUE

not disclosed

COMPLETION

2011



©RLLord