

The Mowings

0871

New studio and living accommodation built on top of an existing brick garage. The lightweight timber structure uses the single-storey garage as its foundations in a newly landscaped site surrounded by farmland and forest in a secluded Essex estuary. The solid timber structure is exposed internally and wood fibre insulation used with a fine-grain timber cladding externally. This is an extremely low impact building, achieves air-tightness to Passivhaus standards and has its hot water and heating provided by solar energy.

SERVICES

structural design of timber superstructure
supply and installation of timber superstructure

MATERIALS

crosslam. glulam, woodfibre insulation
exposed timber finish throughout

INSTALLATION

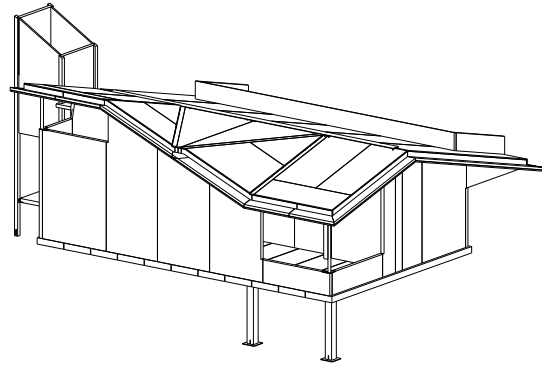
2 weeks

GIFA

220m²

STORED CARBON

30 tonnes CO₂e



CLIENT

Private

ARCHITECT

Walter Menteth

TIMBER ENGINEER

CarbonEng

MAIN CONTRACTOR

Colne Valley Properties

PROJECT VALUE

not disclosed

COMPLETION

2010



© Walter Menteth



© Walter Menteth