

Dune House

0859

A new two-storey private house on the Suffolk coast in Thorpeness. The 'Dune House' was designed by the young Norwegian practice Jarmund Visgnaes Architects and built in association with UK-based Mole Architects in an Area of Outstanding Natural Beauty, over-looking the beach in Thorpeness. CarbonEng was able to achieve the complicated roof geometry and first floor facades using solid timber panels. Eurban installed the timber form upon a cantilevered concrete slab; the house accommodates five en-suite bedrooms.

SERVICES

structural design of timber structure
supply and installation of timber structure

MATERIALS

crosslam
exposed timber finish throughout

INSTALLATION

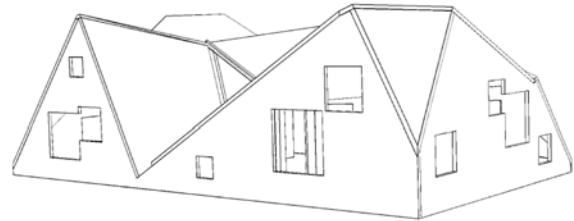
3 weeks

GIFA

125m²

STORED CARBON

47 tonnes CO₂



CLIENT

Private

ARCHITECT

JVA with Mole Architects

TIMBER ENGINEER

CarbonEng

MAIN CONTRACTOR

Willow Builders

COMPLETION

2010



© Mole Architects