

The Highland Club

0855

A three-storey residential new-build within the recently redeveloped Fort Augustus Abbey complex on the shores of Loch Ness. Inserted behind the last remaining bastion wall of the old fort, a wall protected by Historic Scotland, the Brothers Wing is a sensitive addition to one of the finest old buildings in the North of Scotland which, until recently, was inhabited by St Benedictine monks. Comprising five self-contained apartments around a central staircase, it is one of the first multi-occupancy buildings in Scotland to contain a timber stair core.

SERVICES

structural design of timber superstructure
supply and installation of timber superstructure
acoustic and fire consultancy

MATERIALS

crosslam, glulam

INSTALLATION

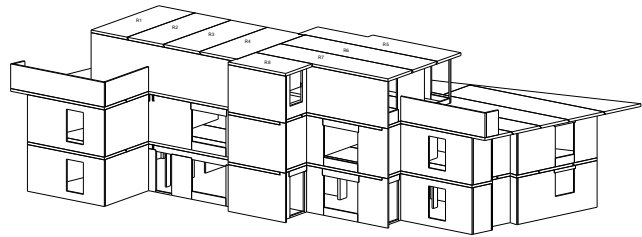
2 weeks

GIFA

517m²

STORED CARBON

125 tonnes CO₂



CLIENT

The Raven Group

ARCHITECT

LDN

TIMBER ENGINEER

Eurban

MAIN CONTRACTOR

Construction Management

PROJECT VALUE

£1m

COMPLETION

2010



© LDN Architects