

**New student accommodation for St Catharine's College, University of Cambridge.** Provision of twenty graduate rooms and two fellows' flats over 2-3 floors. Built during term time, the speed of erection and relatively quiet installation method (compared with traditional build) was a significant benefit to both the client and the architect.

## SERVICES

structural design of timber superstructure  
supply and installation of timber superstructure  
design, supply and installation of timber stairs

## MATERIALS

crosslam, glulam  
exposed internal finishes throughout

## INSTALLATION

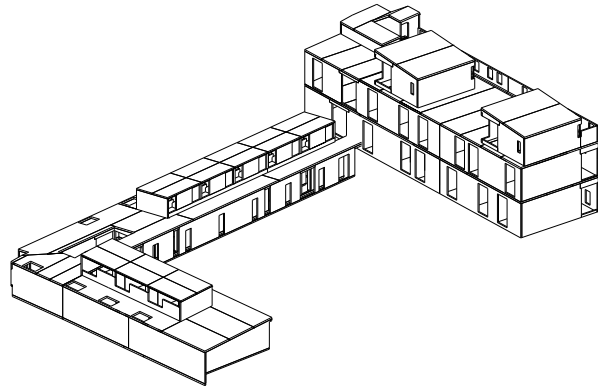
8 weeks

## GIFA

780m<sup>2</sup>

## STORED CARBON

230 tonnes CO<sub>2</sub>



## CLIENT

St Catharine's College

## ARCHITECT

5th Studio

## TIMBER ENGINEER

CarbonEng

## MAIN CONTRACTOR

SDC Builders

## PROJECT VALUE

£2.5m

## COMPLETION

2009

