

# Kay Road

0747

**A new two-bedroom house in South London.** This two storey, solid timber house was built on a 50m<sup>2</sup> in-fill site at the end of a brick terrace in Clapham. The tight site was suited to solid timber construction and pre-fabricated panels were craned into place in just 3 days. Wood fibre insulation was used to add to the low-environmental impact of the construction.

## SERVICES

structural design of timber superstructure  
supply and installation of timber superstructure

## MATERIALS

crosslam. glulam  
exposed timber finish throughout

## INSTALLATION

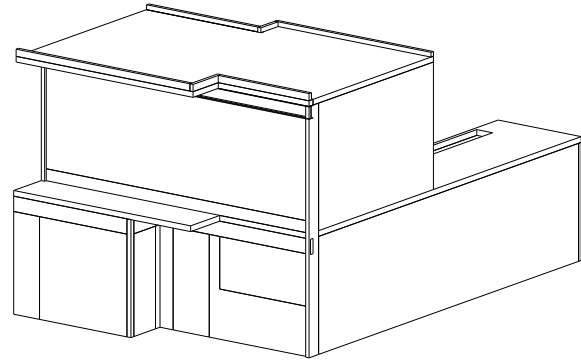
3 days

## GIFA

70m<sup>2</sup>

## STORED CARBON

14 tonnes CO<sub>2</sub>



## CLIENT

private

## ARCHITECT

Methodic Practice

## TIMBER ENGINEER

CarbonEng

## MAIN CONTRACTOR

W S Construction

## PROJECT VALUE

not disclosed

## COMPLETION

2011

