

**A single storey addition to South Thames College accommodating a nursery education centre in Hounslow.** The mono-pitched roofs provide an even north light to the four nursery rooms and the roof overhangs provide covered external play space for the toddlers and infants. The use of CLT panels facilitated the fast erection of the building and forms part of its sustainability strategy, while the exposed internal timber provides a warm, tactile and durable finish.

## SERVICES

structural design of timber superstructure  
supply and installation of timber superstructure

## MATERIALS

crosslam. glulam  
exposed timber finish

## INSTALLATION

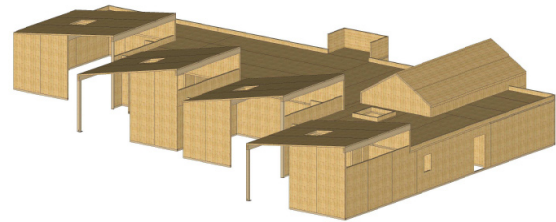
3 weeks

## GIFA

605m<sup>2</sup>

## STORED CARBON

116 tonnes CO<sub>2</sub>



## CLIENT

West Thames College Hounslow

## ARCHITECT

Mackenzie Wheeler

## TIMBER ENGINEER

CarbonEng

## MAIN CONTRACTOR

Osborne Construction

## PROJECT VALUE

£1m

## COMPLETION

2008

