

Block A houses a sports hall and is one of two new buildings built by Eurban as part of the City Academy in the London Borough of Hackney. The sports hall accommodates 3 badminton courts under an 8m-high roof. The Academy is sponsored by KPMG and the City of London Corporation. It achieved a BREEAM rating just short of excellent and won CIBSE Low Carbon Performance Awards, New Build of the Year 2010.

SERVICES

structural design of timber superstructure
supply and installation of timber superstructure

MATERIALS

crosslam, glulam
exposed internal finish

INSTALLATION

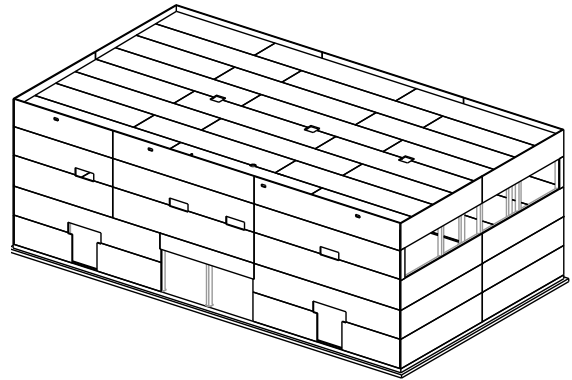
4 weeks

GIFA

building A 640m²

STORED CARBON

155 tonnes CO₂



CLIENT

KPMG / City of London / DCSF

ARCHITECT

Studio E Architects

TIMBER ENGINEER

CarbonEng

MAIN CONTRACTOR

Willmott Dixon

PROJECT VALUE

£30m

COMPLETION

2009

ENVIRONMENTAL RATING

BREEAM Very Good

