

# Strange House

0634

**A new two-bedroom house built inside the client's walled garden in Deptford, South East London.** The solid timber panels were craned into the tight urban site and fixed into the concrete slab foundation, the external concrete upstands were poured after installation. Externally the house is clad in Nicaraguan timber and a combination of flat and profiled cement panels, barely visible above the perimeter wall. Internally the timber is exposed and has been coated with white wax to reflect the light bouncing off the white-painted garden wall.

## SERVICES

structural design of timber superstructure  
supply and installation of timber superstructure

## MATERIALS

crosslam. glulam  
exposed timber finish throughout

## INSTALLATION

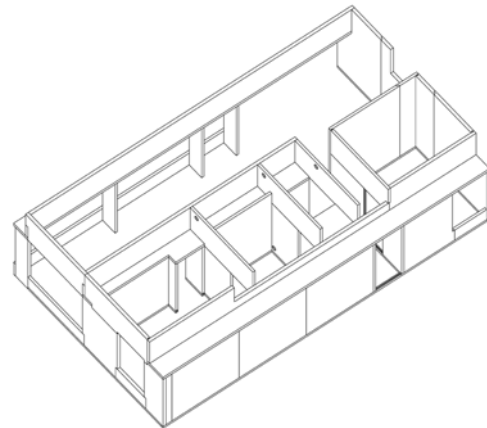
1 week

## GIFA

60m<sup>2</sup>

## STORED CARBON

17 tonnes CO<sub>2</sub>



## CLIENT

Private

## ARCHITECT

Hugh Strange Architects

## TIMBER ENGINEER

CarbonEng

## MAIN CONTRACTOR

Solmaz Ltd

## COMPLETION

2010

