

A new two-bedroom house built inside the client's walled garden in Deptford, South East London. The solid timber panels were craned into the tight urban site and fixed into the concrete slab foundation, the external concrete upstands were poured after installation. Externally the house is clad in Nicaraguan timber and a combination of flat and profiled cement panels, barely visible above the perimeter wall. Internally the timber is exposed and has been coated with white wax to reflect the light bouncing off the white-painted garden wall.

SERVICES

structural design of timber superstructure
supply and installation of timber superstructure

MATERIALS

crosslam. glulam
exposed timber finish throughout

INSTALLATION

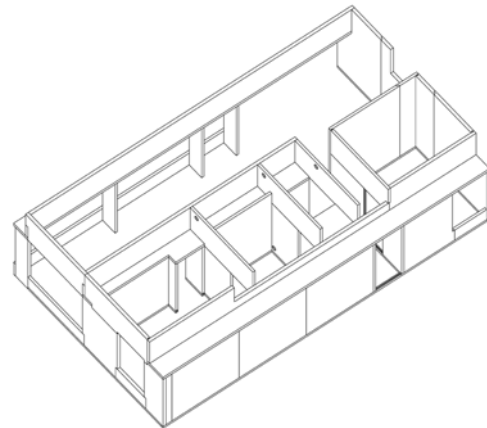
1 week

GIFA

60m²

STORED CARBON

17 tonnes CO₂



CLIENT

Private

ARCHITECT

Hugh Strange Architects

TIMBER ENGINEER

Eurban

MAIN CONTRACTOR

Solmaz Ltd

COMPLETION

2010

