

**Cross-laminated timber extension in the setting of a grade II listed building in the Norfolk Broads.** The extension to the nineteenth-century mill keeper's house is made entirely from CLT which is exposed internally throughout. The building is clad in charred cedar boards and shadows the geometry of the existing brick house. The project won the RIBA Manser Medal 2010 for the best one-off house in the UK.

## SERVICES

structural design of timber superstructure  
supply and installation of timber superstructure

## MATERIALS

crosslam  
exposed timber finish throughout

## INSTALLATION

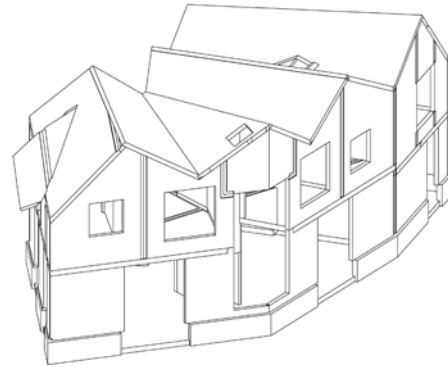
4 weeks

## GIFA

159m<sup>2</sup>

## STORED CARBON

40 tonnes CO<sub>2</sub>



## CLIENT

Private

## ARCHITECT

Acme

## TIMBER ENGINEER

CarbonEng

## MAIN CONTRACTOR

Willow Builders

## PROJECT VALUE

not disclosed

## COMPLETION

2009

