

## Six 4-bedroom houses for Tower Hamlets Community Housing Association in Bethnal Green, London.

The houses are spread across two sites and have been built as part of a larger development of two-storey family houses with internal courtyards to avoid overlooking issues. Six houses have been built to date, as the single-storey garages they replace have been vacated. This scheme won the London Evening Standard New Homes Award in 2010 for Best New Family Home.

### SERVICES

structural design of timber superstructure  
supply and installation of timber superstructure

### MATERIALS

crosslam, glulam

### INSTALLATION

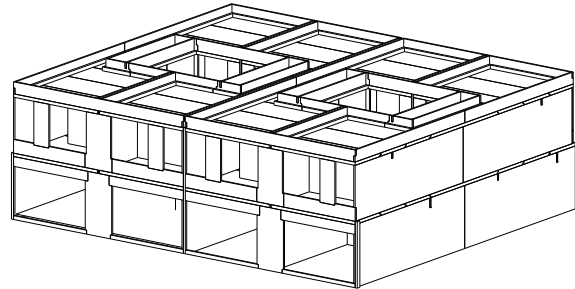
5 weeks

### GIFA

318 m<sup>2</sup>

### STORED CARBON

250 tonnes CO<sub>2</sub>



### CLIENT

Tower Hamlets Community Housing Association

### ARCHITECT

Karakusevic Carson Architects

### TIMBER ENGINEER

Eurban

### MAIN CONTRACTOR

Apollo

### PROJECT VALUE

£900,000

### COMPLETION

2008

### ENVIRONMENTAL RATING

CSH Level 4



© Karakusevic Carson Architects