

Chancery Court

0084

A four-storey residential development in Manor Park, London. One and two-bedroom flats are organised around a central staircase. This was the first solid-timber building in the UK to be owned by a social-housing provider.

SERVICES

structural design of timber superstructure
supply and installation of timber superstructure
design and installation of steel stair

MATERIALS

crosslam, glulam
exposed timber finish

INSTALLATION

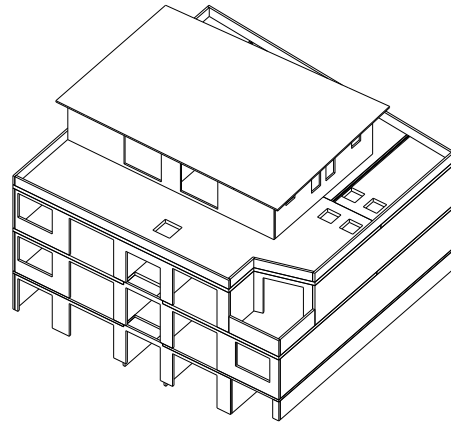
3 weeks

GIFA

653m²

STORED CARBON

173 tonnes CO₂



CLIENT

Lint Group / Swan Housing

ARCHITECT

Quay2c Architects

TIMBER ENGINEER

Eurban

MAIN CONTRACTOR

LI Construction

PROJECT VALUE

£1.1m

COMPLETION

2007

ENVIRONMENTAL RATING

ECOHOUSES Very Good

