

Sunken House

0056

A new three-storey private house and studio for a photographer in Hackney. The site was excavated to basement level and concrete foundations cast to receive the solid timber superstructure. Hemp insulation provides thermal and acoustic insulation and stained timber boards clad the facade and roof.

SERVICES

structural design of timber superstructure
supply and installation of timber superstructure
thermal consultancy

MATERIALS

crosslam, glulam, cassettes
exposed timber finish

INSTALLATION

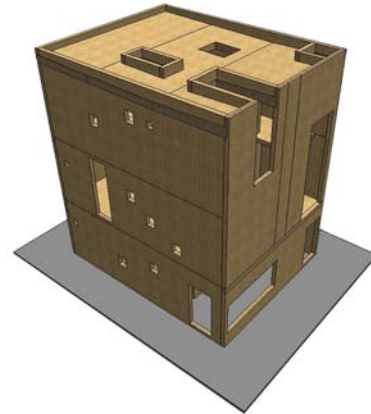
5 days

GIFA

150m²

STORED CARBON

58 tonnes CO₂



CLIENT

Private

ARCHITECT

Adjaye Associates

TIMBER ENGINEER

Eurban

MAIN CONTRACTOR

Construction Management

PROJECT VALUE

£600,000

COMPLETION

2007



© Ed Reeve