

**Provision of the roof and skylight to a three-storey residential development in Charlton South London for housing charity Brick by Brick.** The project accommodates 11 housing units, community facilities and an office for the LHAG charity which provides for the homeless. Eurban installed the roof and large skylight to the central atrium and circulation space. The deep structural frame to the skylight was pre-fabricated as one piece, glazed and craned into place on-site.

## SERVICES

structural design of timber roof  
supply and installation of timber skylight

## MATERIALS

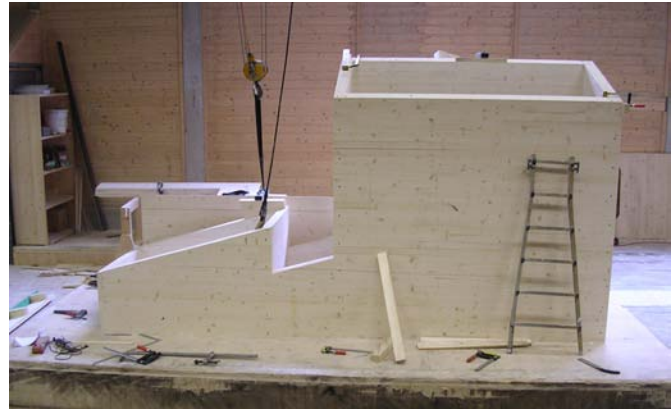
crosslam, glulam

## INSTALLATION

2 weeks

## GIFA

250m<sup>2</sup>



## CLIENT

Brick by Brick (LHAG)

## ARCHITECT

Hampson Williams

## TIMBER ENGINEER

Eurban

## MAIN CONTRACTOR

Pierse Construction

## PROJECT VALUE

£1.2m

## COMPLETION

2007

